

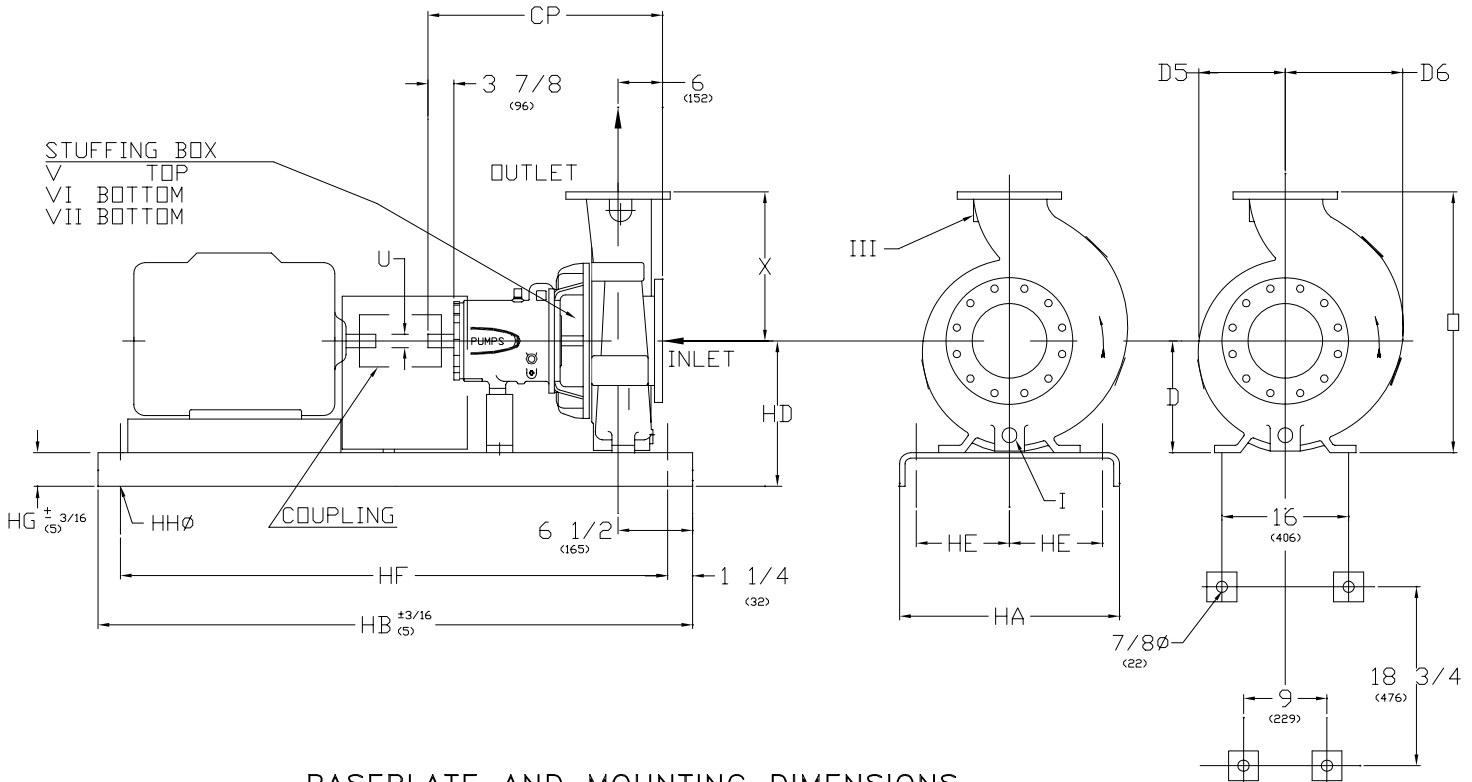
FEOC



ANSI/ASME 3L PROCESS PUMP

SUPPLEMENT DRAWINGS ATTACHED WHEN LISTED BELOW _____ _____ _____ _____	AVAILABLE FLANGES (ANSI B16.5)		OPTIONAL TAP CONNECTIONS	
	CLASS 150 FF <input type="checkbox"/>	CLASS 150 RF <input type="checkbox"/>	I	CASING DRAIN
	CLASS 300 FF <input type="checkbox"/>	CLASS 300 RF <input type="checkbox"/>	II	SUCTION NOZZLE CONN.
	SPECIAL <input type="checkbox"/>	SPECIAL <input type="checkbox"/>	III	DISCHARGE NOZZLE CONN.
BASEPLATE		IV	AUXILIARY CONN.	
STEEL <input type="checkbox"/>		V	STUFFING BOX	
SPECIAL <input type="checkbox"/>		VI	BACK DRILLED SEAL FLUSH CONN.	
		VII	BOTTOM TAP IN STUFFING BOX	

PUMP SIZE INLET X OUTLET - MAX. IMP. DIA.	PUMP WT LBS (KG)	CP	D	D5	D6	□	U		X
							SHAFT	KEYWAY	
3L 6 X 4 - 16	641 (291)	33 7/8 (860)	14 1/2 (368)	10 7/16 (265)	11 5/8 (295)	30 1/2 (775)	2 3/8 (60)	5/8 x 5/16 (16 x 8)	16 (406)



BASEPLATE AND MOUNTING DIMENSIONS

BASE	MAX MOTOR FRAME	HA	HB	HD	HE	HF	HG (NOTA 3)	HHØ	WEIGHT lbs (kg)
368	286T	26 (660)	68 (1727)	19 1/4 (489)	9 1/2 (241)	65 1/2 (1664)	4 3/4 (121)	1 (25)	470 (213)
380	405T	26 (660)	80 (2032)	19 1/4 (489)	9 1/2 (241)	77 1/2 (1969)	4 3/4 (121)	1 (25)	601 (273)
398	449T	26 (660)	98 (2489)	19 1/4 (489)	9 1/2 (241)	95 1/2 (2426)	4 3/4 (121)	1 (25)	746 (338)

BARE PUMP MOUNTING DIMENSIONS

- DIMENSIONS IN PARENTHESIS () ARE IN MILLIMETERS
- INSTALLATION DIMENSIONS ARE +- 1/8" (3) UNLESS OTHERWISE NOTED.
- "HG" DIM. APPLIES TO THE LOWER PAD HEIGHT, WITH SOME BASES THIS WILL OCCUR AT PUMP END AND OTHERS AT MOTOR END.

CUSTOMER		CUSTOMER P.D.		CUSTOMER ITEM No.	
FEOC ORDER No.		SERIAL No.		CERTIFIED BY:	
				DATE	